







1965



SABRE & SASH



Editors:

Roger G. Nicholls, Jr.
Alfred C. Pucci

Faculty Advisor:

Lt. Col. William L. Cottee





Faculty and Administration 230

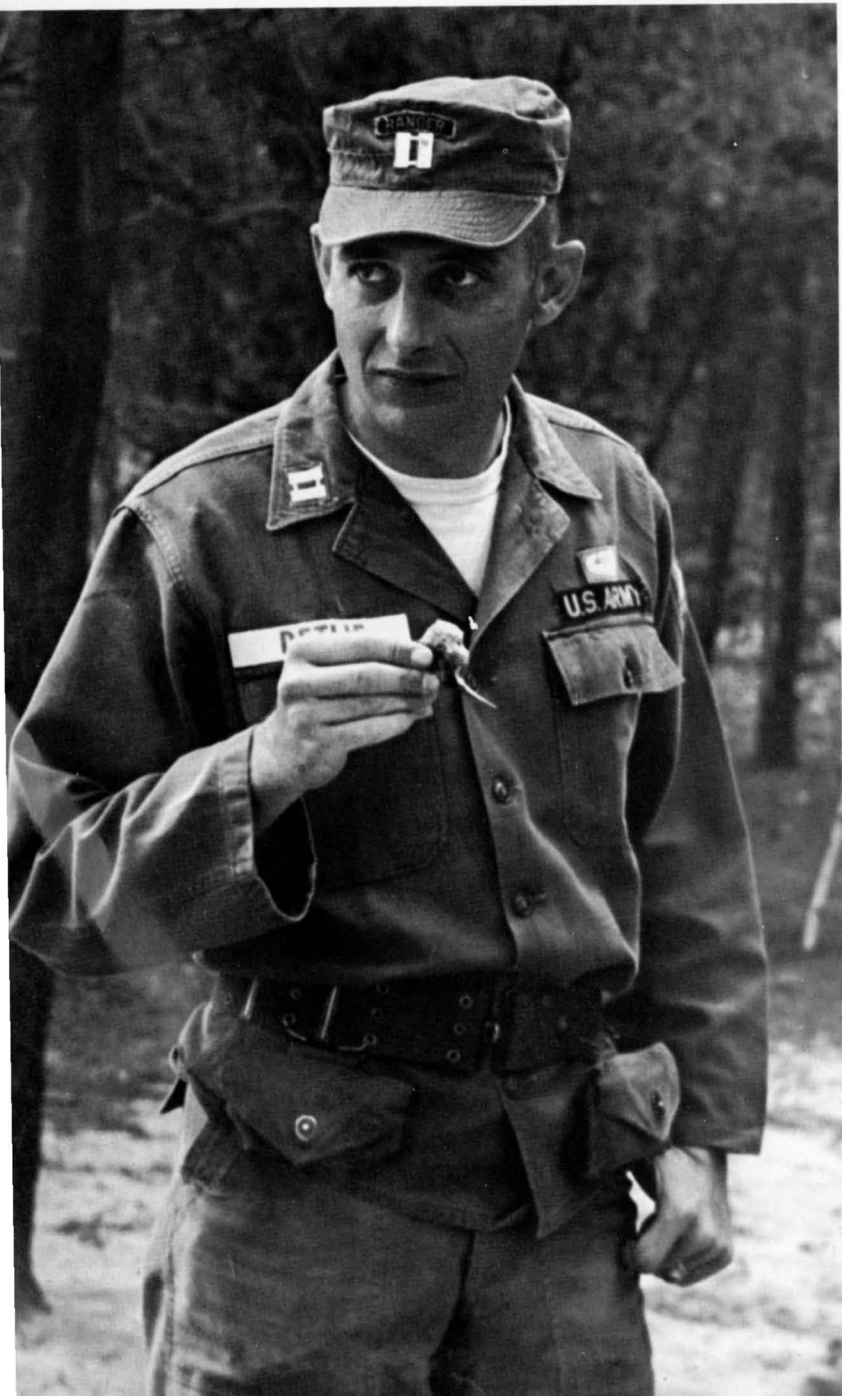
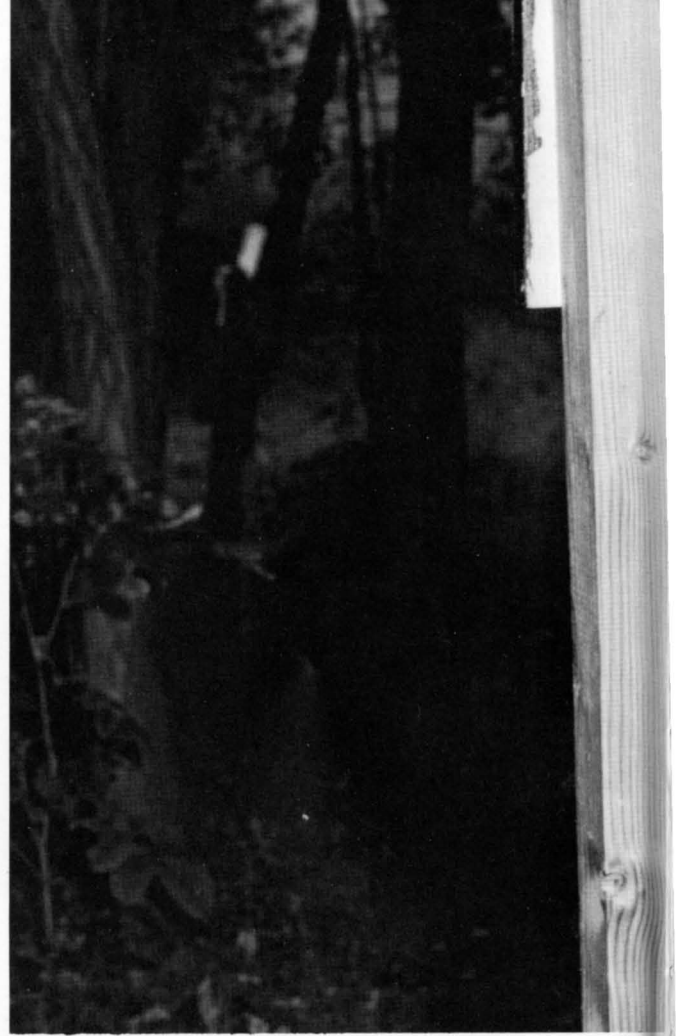
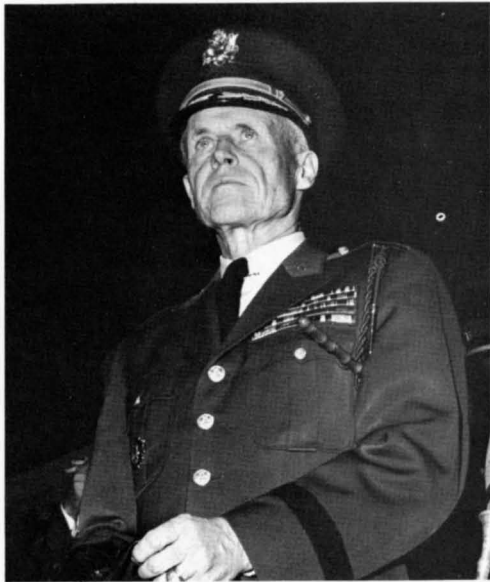
*"I Am a Part of all That I Have Met;
Yet all Experience"*





Is an Arch . . .







U.S. Army Photograph

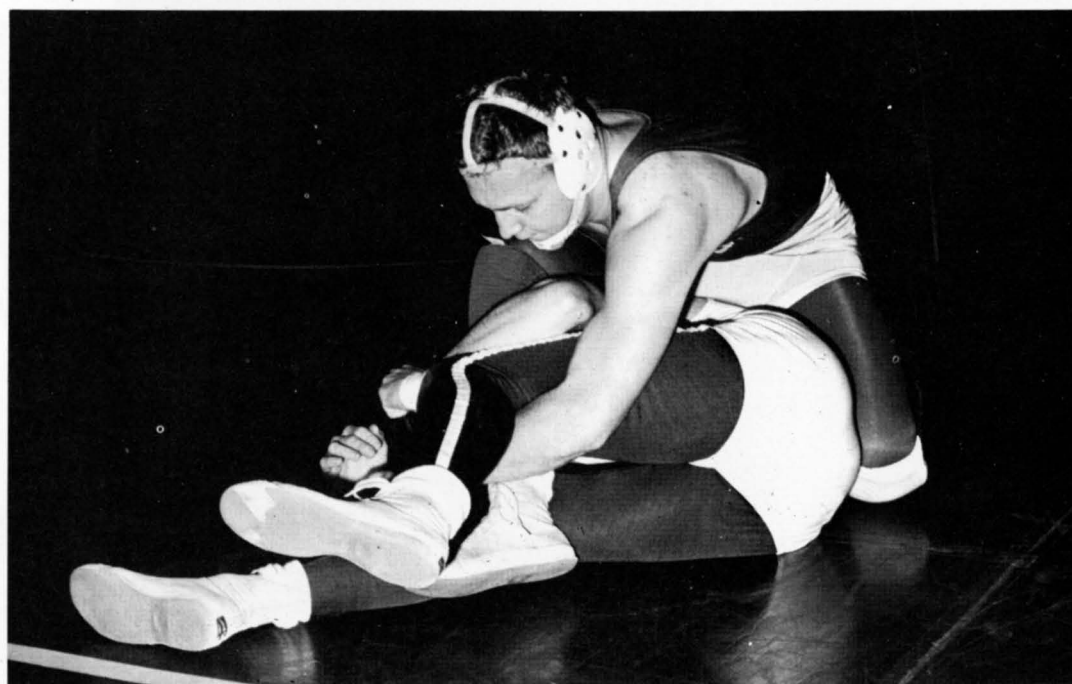
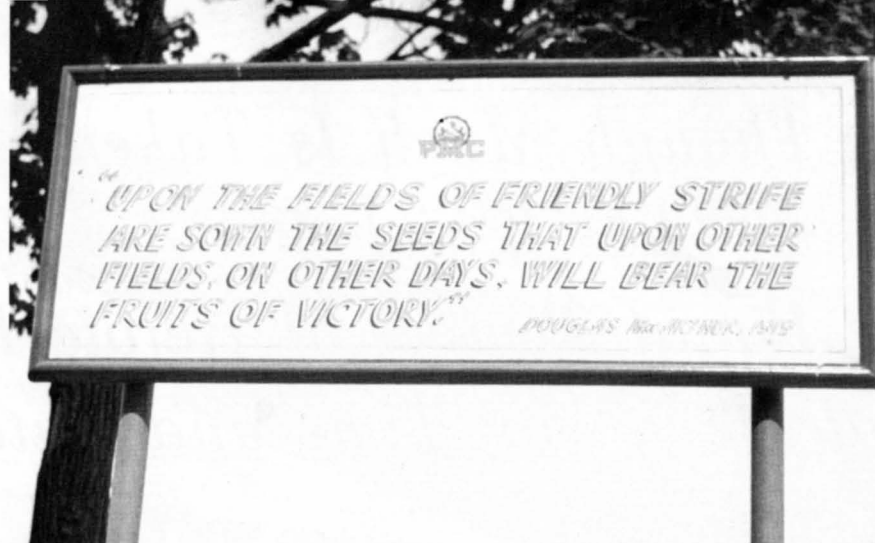




Sports 98

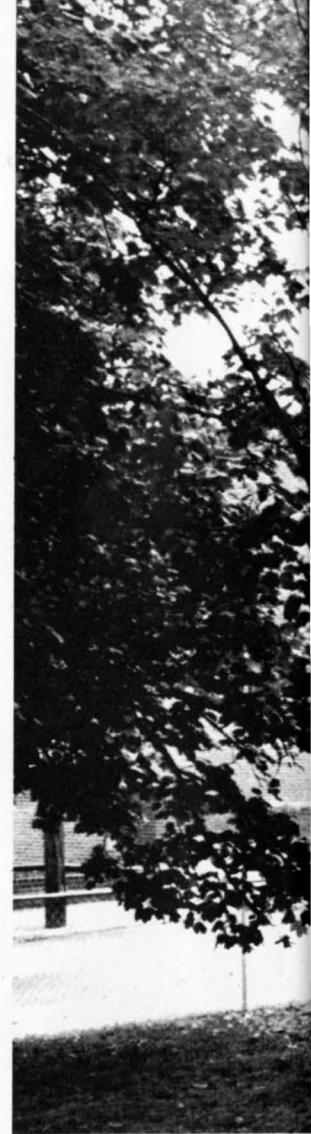
*. . . Where Through Gleams That
Untravelled World Whose Margin
Fades Forever and Forever
When I Move . . .*





*. . . Though Much Is Taken, Much
Abides That Which We Are, We Are;
One Equal Temper of Heroic Hearts,
Made Weak by Time and Fate . . .*

Features 56



Organizations 18





Photo by Walter Holt-PDA





BUT STRONG IN WILL TO STRIVE, TO SEEK,

Seniors 198





Civillian 174

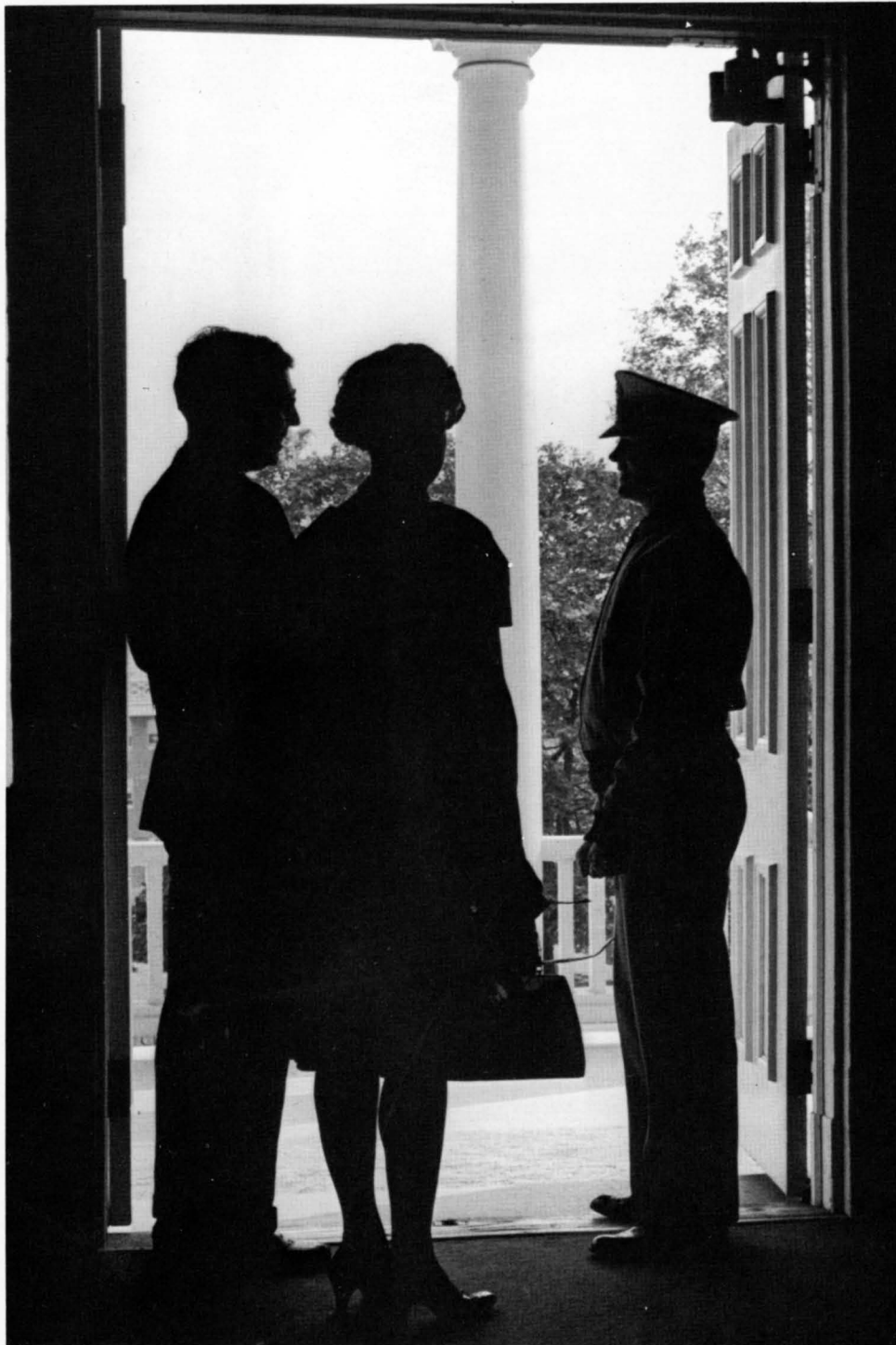
TO FIND, AND NOT TO YIELD

Alfred Lord Tennyson — ULYSSES —

Photo by Walter Holt-PDA



DEDICATION



After four years, we have come to the end of an important plateau in our lives. College is far more than term papers, final exams, dances and other activities. It represents four important years in the formation of our basic beliefs, principles and direction in life. Therefore, the Class of 1965 gratefully dedicates this year's edition of the *Sabre & Sash* to those who have made this experience possible — our Parents. Without their financial, and moral help, their many personal sacrifices and persevering encouragement, these four years would not have come to pass.

PRESIDENTIAL MESSAGE



Dear Senior:

A college is a collection of people — individuals dedicated to purposeful learning, to the search for truth, and the creation of new knowledge. Its student body, its faculty, and its alumni are its strength. Each institution has its own individuality, just as you do as a person. PMC's is the sum total of all the personalities that have contributed — and continue to contribute — to its development and its educational climate — yours and mine.

Four brief years ago, I was privileged to welcome you to the PMC campus. Hardly anyone could then have envisioned the extent to which PMC was — and will continue — to influence your life and your ambitions. Now I am about to grasp your hand as I give you your diploma and wish you well as you move forward into graduate school or go directly into a career. As you leave campus living to go forth into the world, I know that you will forever cherish your college experiences and associations and that PMC will grow ever more meaningful to you in your years as an alumnus.

Your Alma Mater is always interested in your welfare.

Sincerely yours,

A handwritten signature in dark ink, which appears to read "Clarence R. Moll". The signature is stylized with a large, looping initial "C" and a long, sweeping underline.

Clarence R. Moll



STUDENT GOVERNMENT

(FIRST ROW) — P. Stein, W. Dennison (Advisor), D. Taylor, P. Brennan, G. Stolis, G. Sheppard. (SECOND ROW) — J. Sinclair, W. Allanch, R. Corbin, M. Sullivan, C. Miller, P. Rohana, F. Grau, V. Davis.



D. Taylor President
 G. Stolis Vice President
 P. Brennan Secretary
 W. Allanch Treasurer

CLASS OFFICERS

1965



President:
W. Clayton, Jr.

Vice-President:
J. Boydston, III

Secretary:
J. McNamara

Treasurer:
R. Stocker

Faculty Adviser:
Prof. M. Lowe

1966



President:
J. Vaules, Jr.

Vice-President:
C. Goebel, Jr.

Secretary:
G. Frame, Jr.

Treasurer:
R. Templin

Faculty Adviser:
Capt. D. Detlie

1964-1965

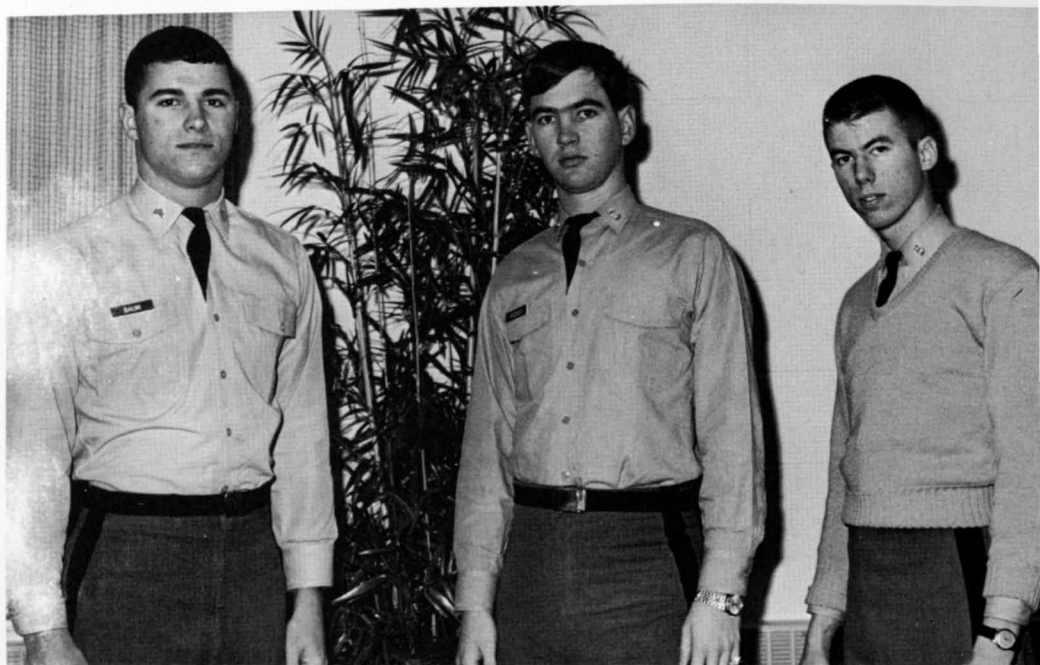
1967

President:
W. Baum, Jr.

Vice-President:
T. Tarbutton

Sec.-Treas.:
H. Rodner, III

Faculty Adviser:
Prof. H. Gleason, Jr.



1968



President:
G. DeRise

Vice-President:
W. Dorrell

Secretary:
R. Callentine

Treasurer:
F. Gerhard

Faculty Adviser:
Prof. F. Navarro