



to find

To find something beyond the classes, the parties, the grades, and the constant build-ings. It may be your dream of a career, however humble. It might be the friendship in a fraternity house, the memory of last weekend and your hopes for the next. The silence and beauty of a museum or the fusion of a registration. It may be your success at a new free-dom or the acceptance of your potential. To find that that will remain beyond your diploma; to inspire you when challenge again demands.

THETA CHI



The Epsilon Gamma Chapter of Theta Chi Fraternity is the oldest fraternity on PMC's Campus. It traces its origins to Pi Mu Chi, a local fraternity, founded in April 1948 and was installed nationally on May 26, 1956. The fraternity is pictured above before departing on their yearly trip to the Bahamas.

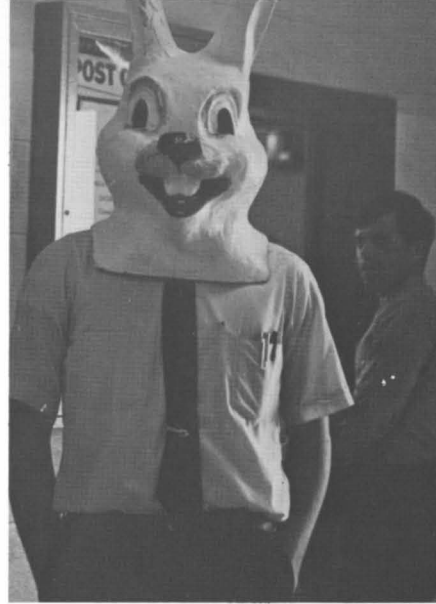


Politics and *Playboy*, the best of both worlds.

1968 was a year of fierce competition among the fraternities on our campus. Theta Chi found it a bit more difficult to maintain its leadership position. However, with involved officers and increased interest by most brothers Epsilon Gamma Chapter improved their position fraternally and financially. Few graduating seniors will forget the discussions of progress versus tradition and no one will forget Tus and his treasury. Cupid found his path easy among the senior brothers and so did Hymen as many became husbands or honorary uncles.

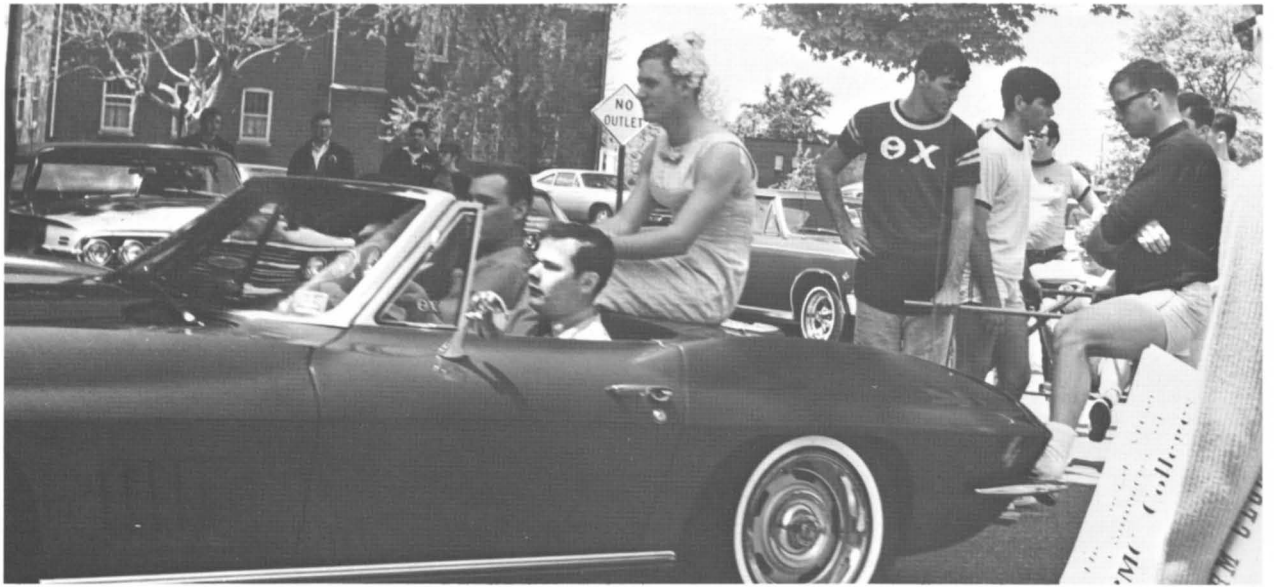
In spite of the atmosphere of change, discussion, evaluation, and concern, Theta Chi remained together.

President-Elect John Flannagan, an example of progress.



Fraternity Officers: President Robert Chang, Vice President Ronald Callantine, Secretary Chris Kowna, Treasurer Carlo Cestra, Pledgemaster Robert Kamper, Ass't Pledgemaster Dennis Dixon, Librarian Ronald Deramo, Chaplain William Knaus, Social Chairmen James Lott and Gary Klemek, Faculty Adviser Professor Frank Matthews.





Next year that chariot is going to make it!

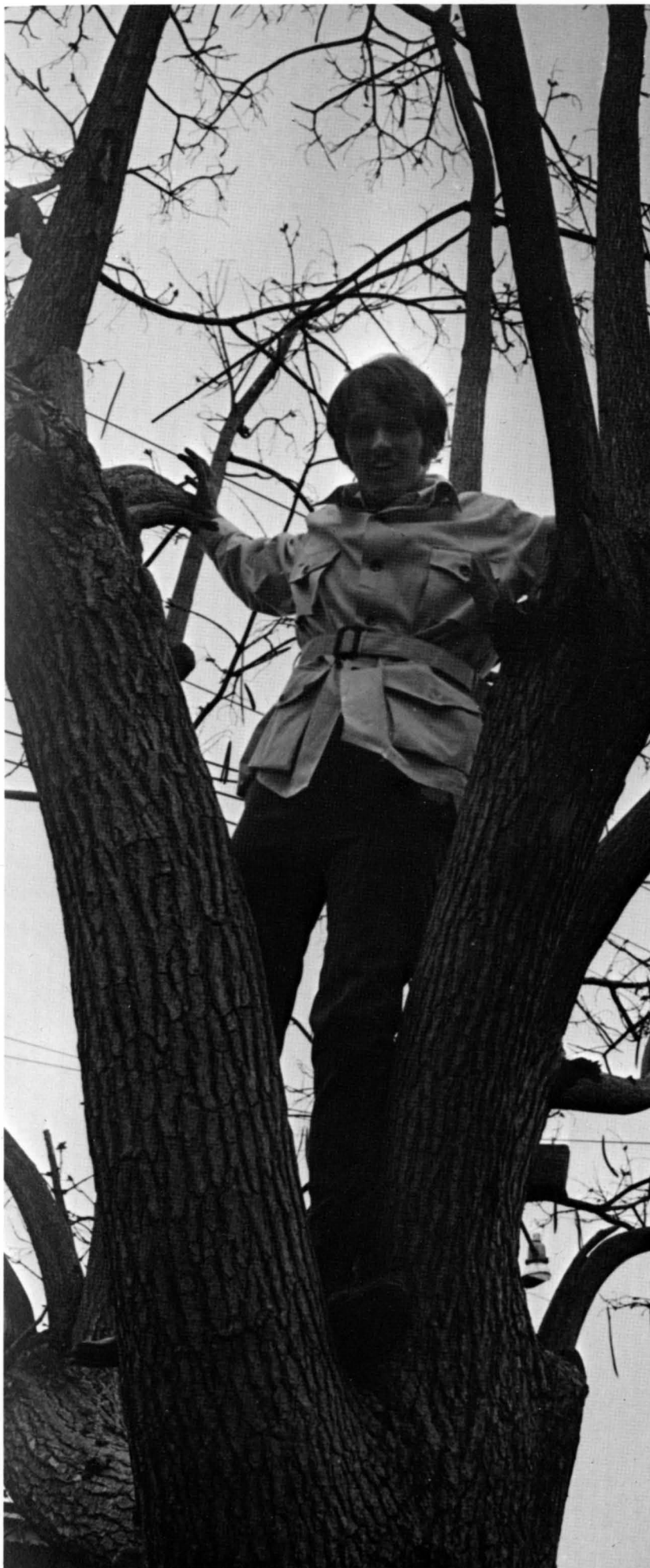


The Spring Pledge Class. Fred Trautman, Pledgemaster.

TAU KAPPA EPSILON



Theta Lambda Chapter of Tau Kappa Epsilon Fraternity was installed on April 29, 1961, on PMC's Campus. Its origins are Delta Delta Rho, a local social fraternity, founded in 1951. The Brothers of TKE are shown outside their house where they found themselves during most of this year.



The Brothers of Tau Kappa Epsilon found this to be a year of challenge and they met it with a great deal of brotherhood. Faced with social probation and denied house privileges because of a few brothers, TKE remained together and established a strong foundation for future years.

Theta Lambda kept themselves in the forefront of small college TKE Chapters nationally with their many service and community participation projects.



Jimmy Miller

Fraternity Officers: President Alfred Peck, Vice President George Reif, Secretary Leonard Frampton, Treasurer Kenneth Byerly, Historian William Starke, Sergeant-at-Arms Robert Weaver, Faculty Adviser Mr. Daniel Horninger.



Roger Parkhouse





Although the doors were closed the fraternity was open.

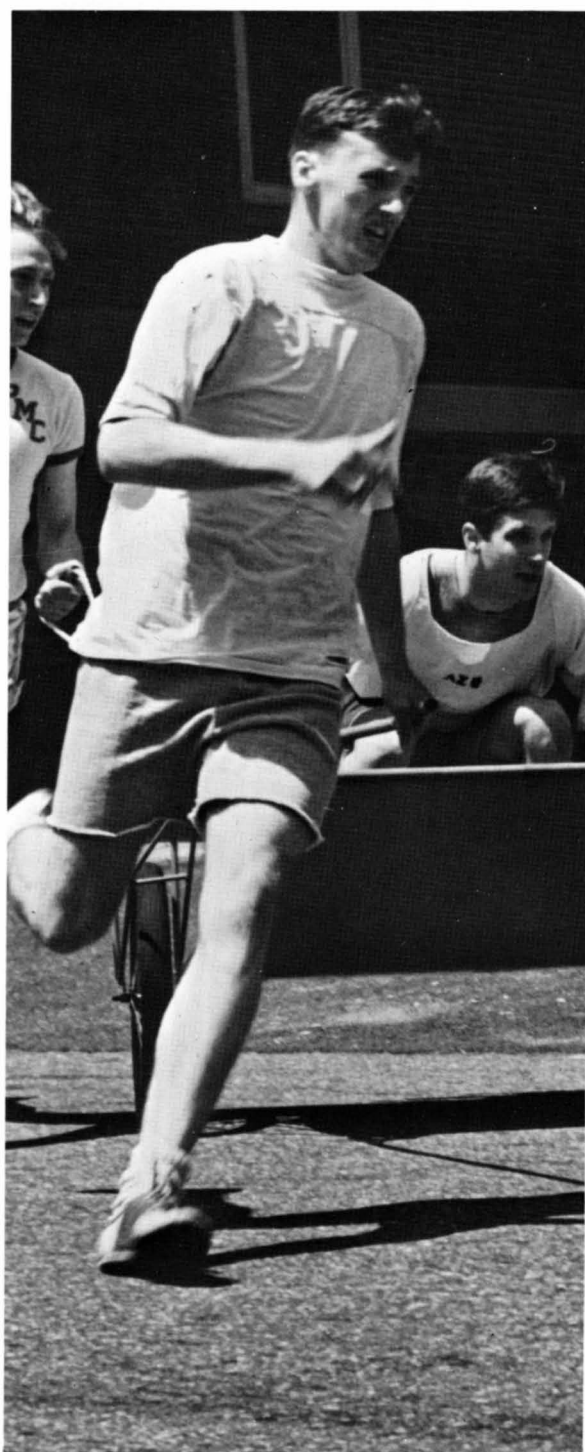


The Spring Pledge Class. William Reilly, Pledgemaster.

ALPHA SIGMA PHI



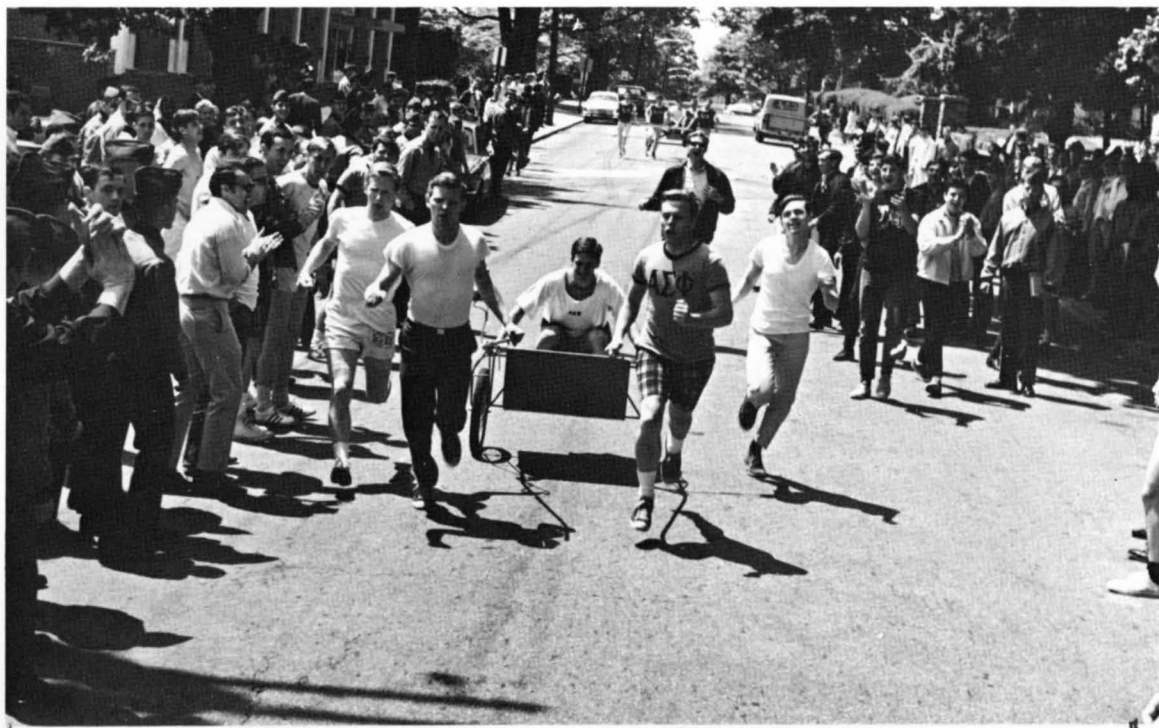
Alpha Sigma Phi, Gamma Xi Chapter was installed on April 28, 1962, on PMC's Campus. Its origins were from Lambda Zeta Rho, a local PMC fraternity founded in March, 1961. The Brotherhood is shown on the rocks.



A quiet afternoon at the House.

Alpha Sigma Phi had a typically good year with their many parties and water fights on Chestnut Street. The highpoint of the year for the brotherhood came during Greek Week when Alpha Sig captured the competition with an overpowering victory in the chariot race.

The fraternity could not have found better leaders and they demonstrated well-rounded interest throughout the campus. Alpha Sig contributed the majority of PMC's basketball and track teams.



Crossing the finish line.



This is what Brotherhood means?



Fraternity Officers: President John Potts, Vice President Donald Huff, Secretary Gerald Pepin, Treasurer Robert Ciunci, Marshall Thomas Fields, Sergeant-at-Arms Charles Sharbaugh.



Pledge Class

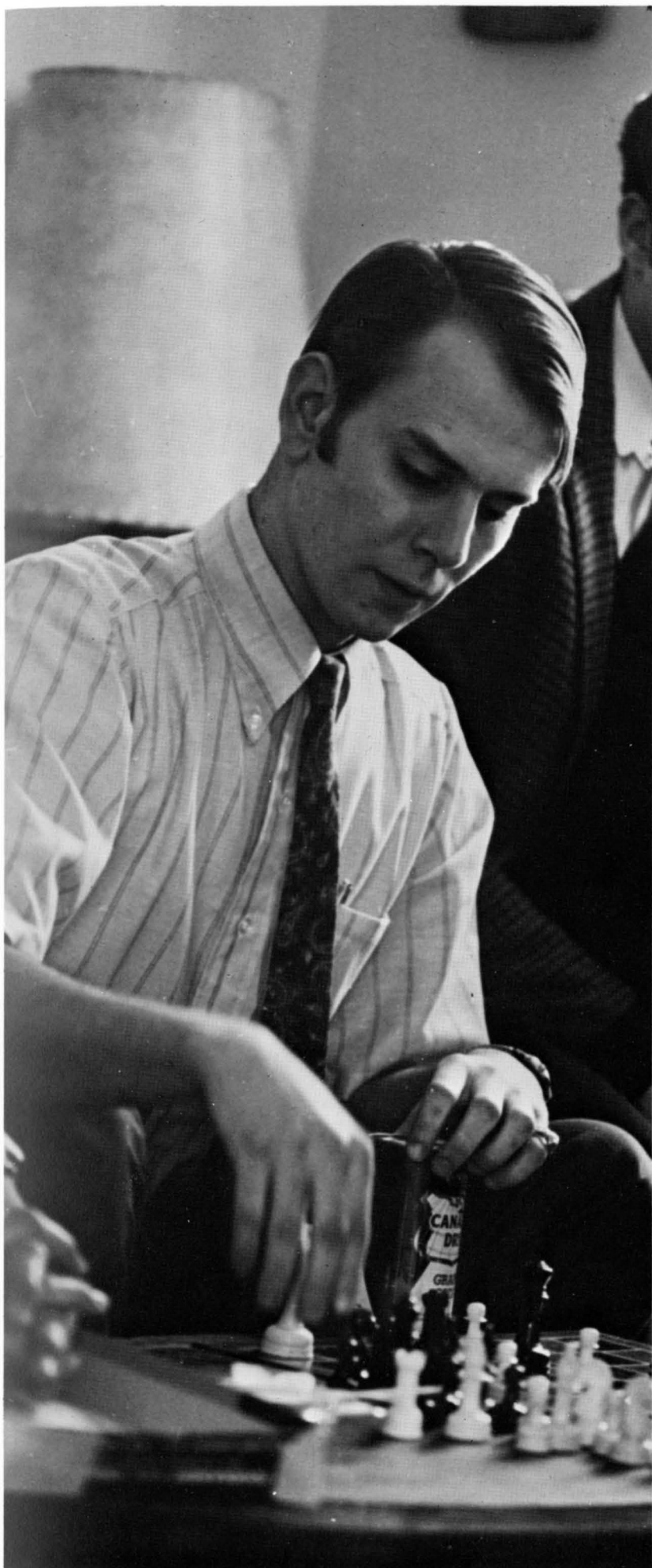
KAPPA SIGMA



Kappa Sigma began with the establishment of Kappa Sigma Theta on PMC's Campus on November 23, 1965. They merged this year with Delta Sigma Chi, another local that was founded December 14, 1966. They met with national approval this year and were established as a Colony of Kappa Sigma National. The fraternity is photographed supporting Chester's industries.



Of all the fraternities on PMC's Campus this was Kappa Sig's year. After many months of frustration they finally were granted national affiliation. Because of their many service projects and their close involvement with the activities of their college they were also granted the Celluci Trophy that is symbolic of the best fraternity of the year at PMC. Kappa Sig began presenting awards to members of the college outside of the fraternity that demonstrated the most college spirit. They led the other fraternities in the annual collections for the United Fund. PMC and all the fraternities look forward to Kappa Sigma's emergence as a strong fraternity that will strengthen the interfraternity system at PMC Colleges.

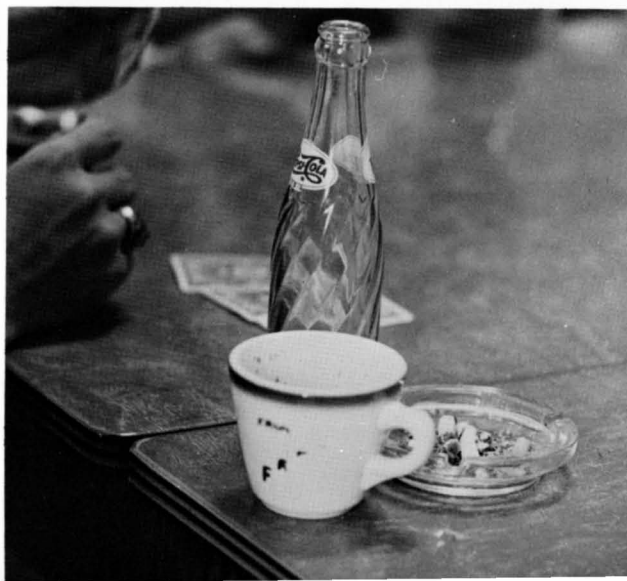




Kappa Sig's answer to Jack Benny.



Fraternity Officers: President Kenneth Zitarrelli, Vice President Edward Fiss, Secretary Richard Gamble, Treasurer Martin Sproat, Master of Ceremonies David Beckmann, High Guard Mark Kern, Faculty Adviser Professor Joseph Arbuckle.





Kappa Sigma finished 2nd during Greek Week.



Spring Pledge Class